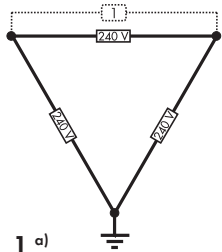


INVERTERS & UTILITY GRID CONFIGURATION

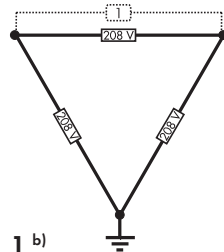
Common Utility Grid Transformers in 60 Hz in North America, Central America, and the Caribbean. Please verify with appropriate installation manual.

240 V Delta Corner Ground



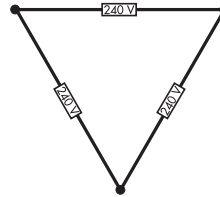
- 1 a)**
 SB 3.0-US
 SB 3.8-US
 SB 5.0-US
 SB 6.0-US
 SB 7.0-US
 SB 7.7-US

208 V Delta Corner Ground



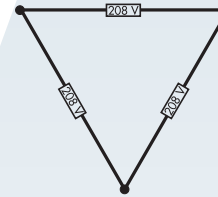
- 1 b)**
 SB 3.0-US
 SB 3.8-US
 SB 5.0-US
 SB 6.0-US
 SB 7.0-US
 SB 7.7-US

240 V Delta



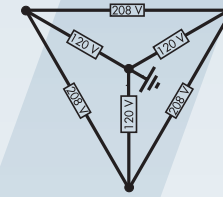
- L-L a)**
 SB 3.0-US
 SB 3.8-US
 SB 5.0-US
 SB 6.0-US
 SB 7.0-US
 SB 7.7-US

208 V Delta



- L-L b)**
 SB 3.0-US
 SB 3.8-US
 SB 5.0-US
 SB 6.0-US
 SB 7.0-US
 SB 7.7-US

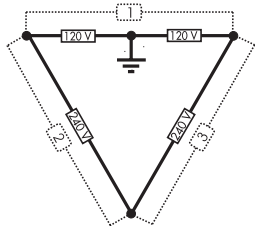
208 V WYE



- L-L**
 SB 3.0-US
 SB 3.8-US
 SB 5.0-US
 SB 6.0-US
 SB 7.0-US
 SB 7.7-US

- L-N**
 SI 4548-US - 120 V
 SI 6048-US - 120 V

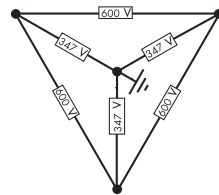
240 V Stinger Ground



- L-L c)**
 SB 3.0-US
 SB 3.8-US
 SB 5.0-US
 SB 6.0-US
 SB 7.0-US
 SB 7.7-US

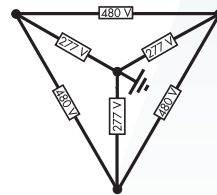
- L-N**
 SI 4548-US - 120 V
 SI 6048-US - 120 V

600 V WYE



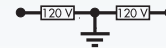
- 3φ**
 SHP 150-US

480 V WYE



- 3φ**
 STP 33-US
 STP 50-US
 STP 62-US
 SHP 125-US

240 V Split-Phase

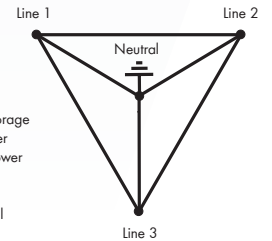


- L-L**
 SB 3.0-US
 SB 3.8-US
 SB 5.0-US
 SB 6.0-US
 SB 7.0-US
 SB 7.7-US
 SBS 3.8-US
 SBS 5.0-US
 SBS 6.0-US

- L-N**
 SI 4548-US
 SI 6048-US

LEGEND

- SB Sunny Boy
- SBS Sunny Boy Storage
- STP Sunny Tripower
- SHP Sunny Highpower
- SI Sunny Island
- L-L Line to Line
- L-N Line to Neutral
- 3φ 3 Phase



a) 240 V country standard must be selected during commissioning
 b) 208 V country standard must be selected during commissioning
 c) For the inverters connected as shown by 2 and 3, 240 V country standard must be selected during commissioning

